



1800 Larimer Street, Suite 400
Denver, CO 80202



Construction on the Northern Colorado Area Plan includes using single-pole structures which will range between 80 and 130 feet in height.

Find out more information about the Northern Colorado Area Plan and submit comments at xcelenergy.com/northerncolorado.

The open house will serve as an opportunity for residents to learn more about the project, view potential route maps, ask questions and provide feedback on the project and potential routes. Please stop by anytime. No formal presentation is scheduled.

October 26
4 p.m.-8 p.m.
Highland School District Re-9
School District Admin Building Board Room
210 1st Street
Ault, CO

Public Open House Schedule

You are invited to attend a public open house hosted by Xcel Energy to learn more about a proposed transmission line project in your area. The Northern Colorado Area Plan will increase electric reliability and load-serving capability of the Xcel Energy electric transmission system north of Greeley. The project includes building the WAPA Ault to Cloverly Transmission Line which consists of approximately 25 miles of new 115 kilovolt (kV) and 230 kV transmission lines and two new substations. This is a first step to replace the existing 44 kV system in the area with higher voltage transmission facilities. The 44 kV system is one of the oldest transmission assets owned by Xcel Energy with some of the infrastructure dating back to the early 1900's.

New infrastructure will deliver improved electric reliability and enhanced customer service

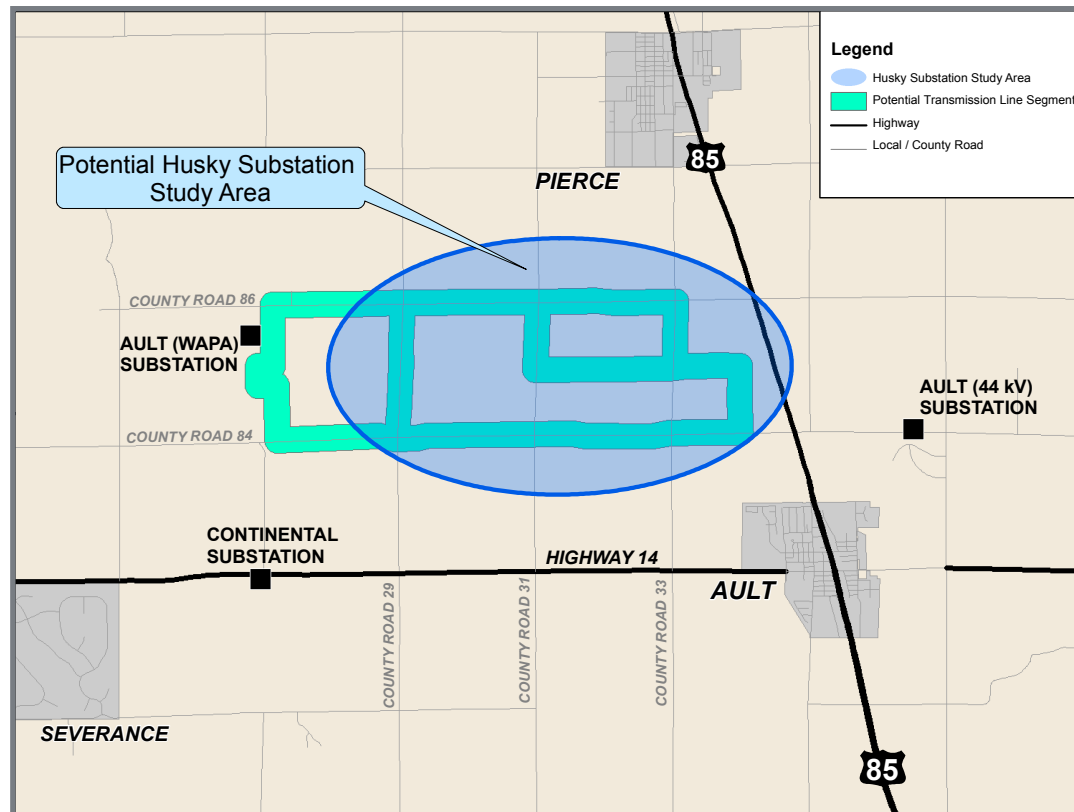
Xcel Energy hosting public open house for proposed Northern Colorado Area Plan



Project Components

The proposed WAPA Ault to Cloverly Transmission Line includes 25 miles of new 115 kV and 230 kV transmission line, between the WAPA Ault Substation, located approximately five miles northwest of Ault and the Cloverly Substation, located approximately one mile north of Greeley. The first phase of the project includes building approximately seven miles of 230 kV transmission line between the WAPA Ault Substation and a new substation near the town of Ault. Pending approvals, the project is expected to be completed by 2020.

Northern Colorado Area Plan: WAPA Ault to Husky Proposed Transmission Line Project Area



Regulatory Filings

Xcel Energy filed a Certificate of Public Convenience and Necessity (CPCN) application with the Colorado Public Utilities Commission (CPUC) on March 9, 2017 to construct the Northern Greeley Area Plan. When proposing a high voltage transmission line project, investor-owned utilities must file a CPCN application with the CPUC. You can review all regulatory filings on the CPUC web site by entering 17A-0146E in the 'Proceeding Number' field. The CPCN process allows Xcel Energy to proceed with implementation, but does not decide the specific routes and locations of the transmission lines and other infrastructure. Those issues are determined through a separate local government siting process. Xcel Energy will file for development permit approvals with Weld County and the towns of Ault and Eaton.

Schedule Pending Approval

- **2017** – File applications for Use by Special Review and 1041 Areas and Activities of State Interest with Weld County
- **2018** – Begin Construction
- **2020** – Project placed in-service

Contact Us

Learn more about the project, view detailed maps, submit questions and leave comments at xcelenergy.com/northerncolorado.

You can also reach us at 888.678.7640 or by emailing northerncolorado@xcelenergy.com.