

Figure 6
Land Use

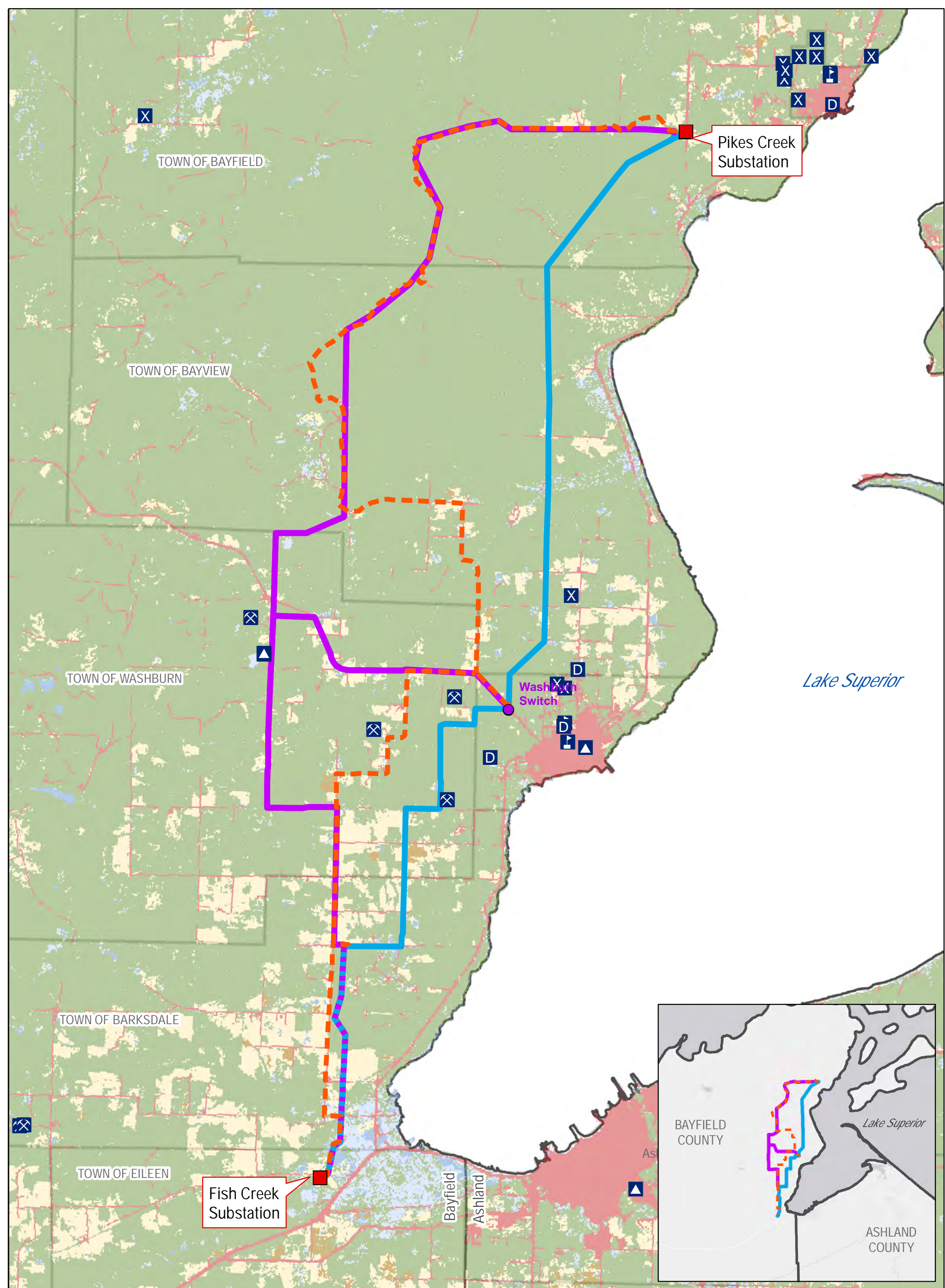


Figure 6. LAND USE (LAND COVER)
 BAYFIELD SECOND CIRCUIT TRANSMISSION LINE PROJECT



This information is believed to be correct, but is subject to change and carries no warranty. It is intended for reference purposes only. Applicant owned and operated facility locations are approximate. Data courtesy of Xcel Energy, ESRI, WDNR, Merjent, USGS Gap Land Cover Dataset and ATC. JANUARY 2019

Proposed Substations	Daycare	Developed
West Route	School	Crop Land
East Route	Airport	Forested Wetland
Bypass Lines	Communication Tower	Grassland
County	Cemetery	Non-Forested Wetland
Township	Active Mines or Quarry	Upland Forest

0 0.5 1 2 Miles

Figure 7
Zoning

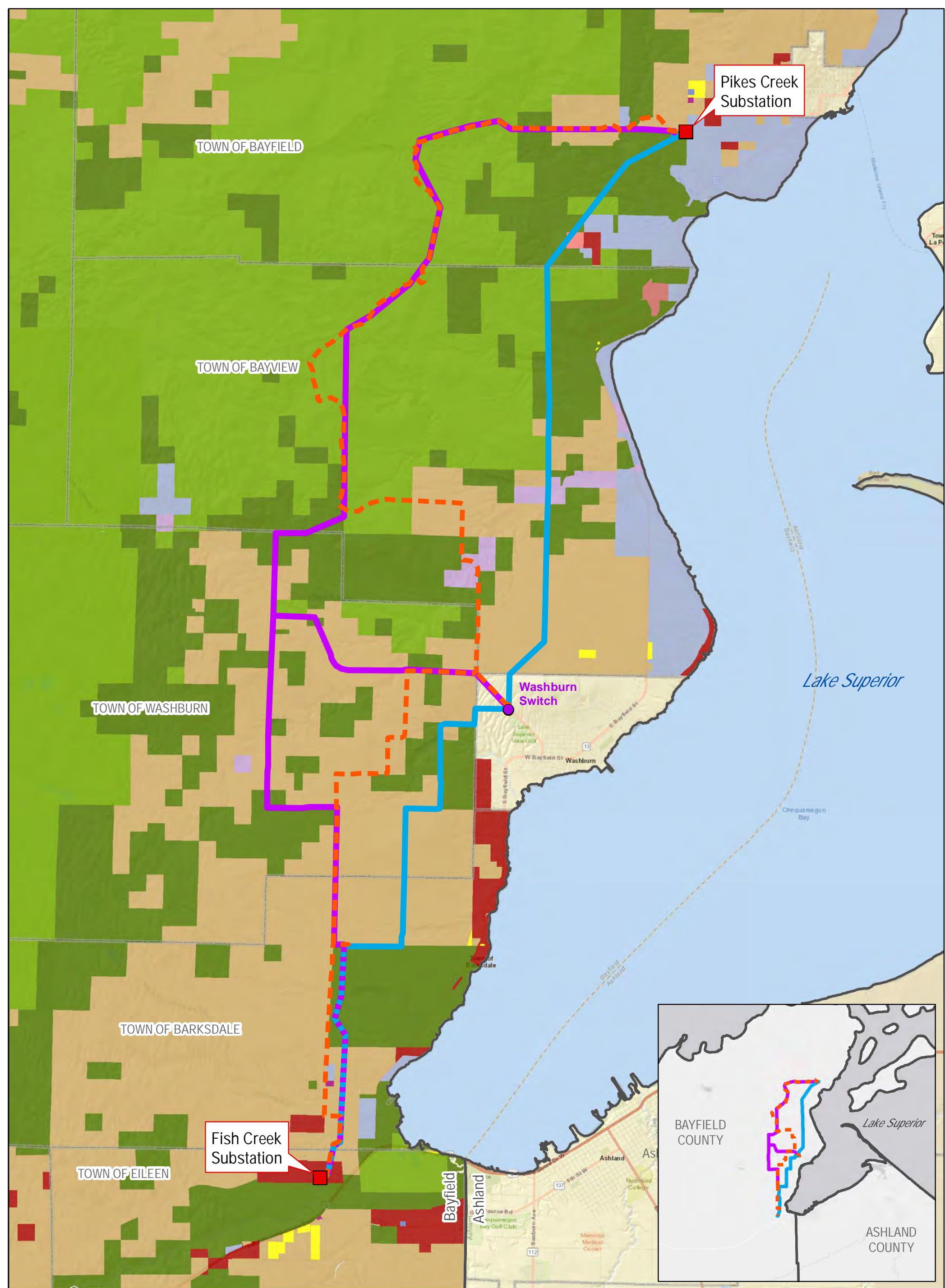


Figure 7. ZONING
 BAYFIELD SECOND CIRCUIT TRANSMISSION LINE PROJECT



This information is believed to be correct, but is subject to change and carries no warranty. It is intended for reference purposes only. Applicant owned and operated facility locations are approximate. Data courtesy of Xcel Energy, Bayfield County, ESRI, WDNR, Merjent and ATC.

JANUARY 2019

- | | | |
|----------------------|------------------------|------------------------------|
| Proposed Substations | (R1) - Residential - 1 | (F1) Forestry - 1 |
| West Route | (R2) - Residential - 2 | (F2) Forestry - 2 |
| East Route | (R3) - Residential - 3 | (A1) Agricultural - 1 |
| Bypass Lines | (C) Commercial | (W) Conservancy |
| | (I) Industrial | (R-RB) Recreational Business |
| | (M) Municipal | |



Figure 8

Public Lands and Recreation Areas and Trails

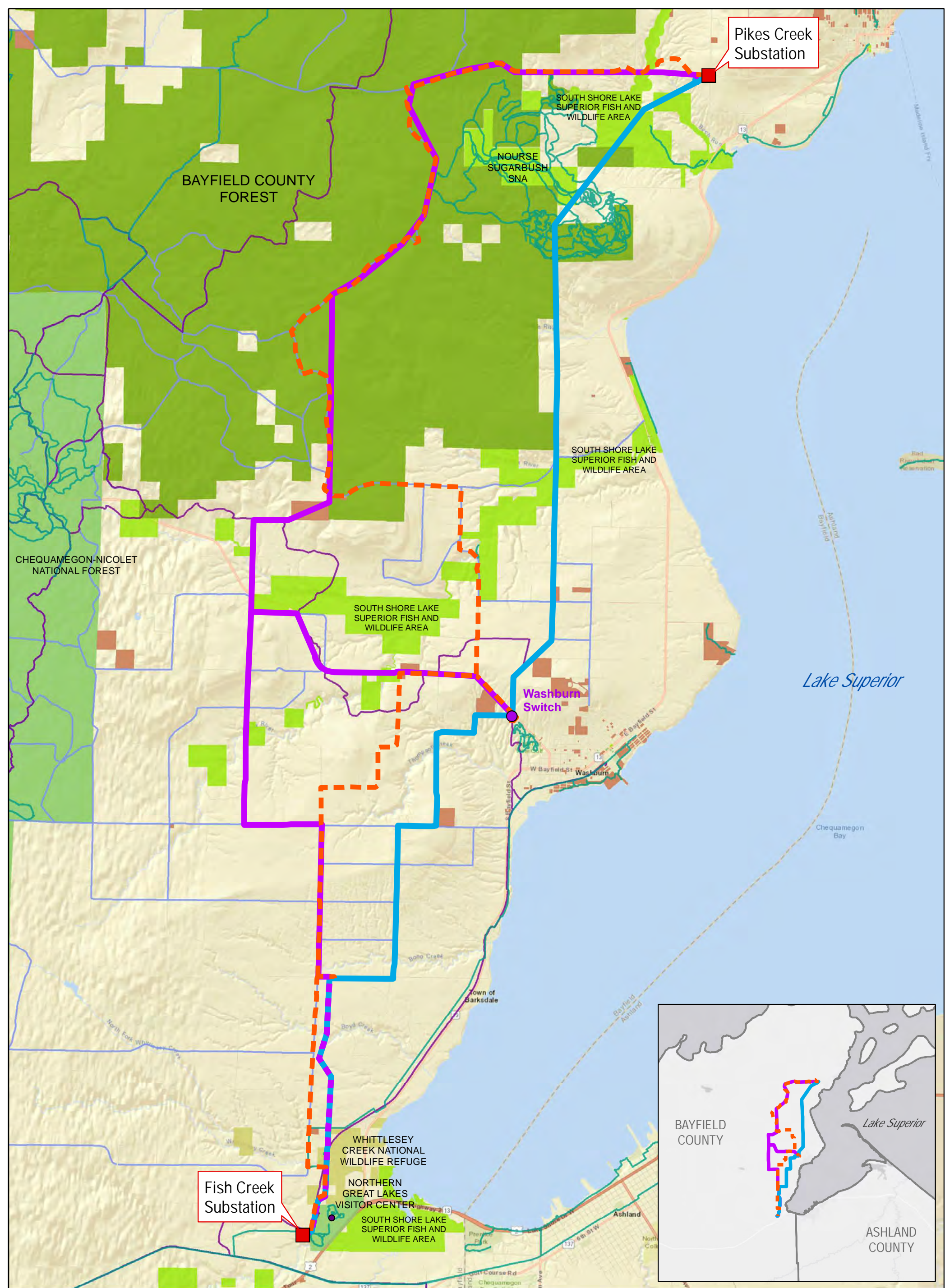


FIGURE 8. PUBLIC LAND & RECREATION
 BAYFIELD SECOND CIRCUIT TRANSMISSION LINE PROJECT

- Proposed Substations
- West Route
- East Route
- - - Bypass Lines
- - - Silent Sport Trails
- - - Snowmobile Trails
- - - ATV Trails & Routes
- County
- WDNR
- USFS
- USFWS
- Local



This information is believed to be correct, but is subject to change and carries no warranty. It is intended for reference purposes only. Applicant owned and operated facility locations are approximate. Data courtesy of Xcel Energy, ESRI, WDNR, Merjent, NPMS and ATC.

