

# HOPKINS TO BASALT 115-KV REBUILD PROJECT

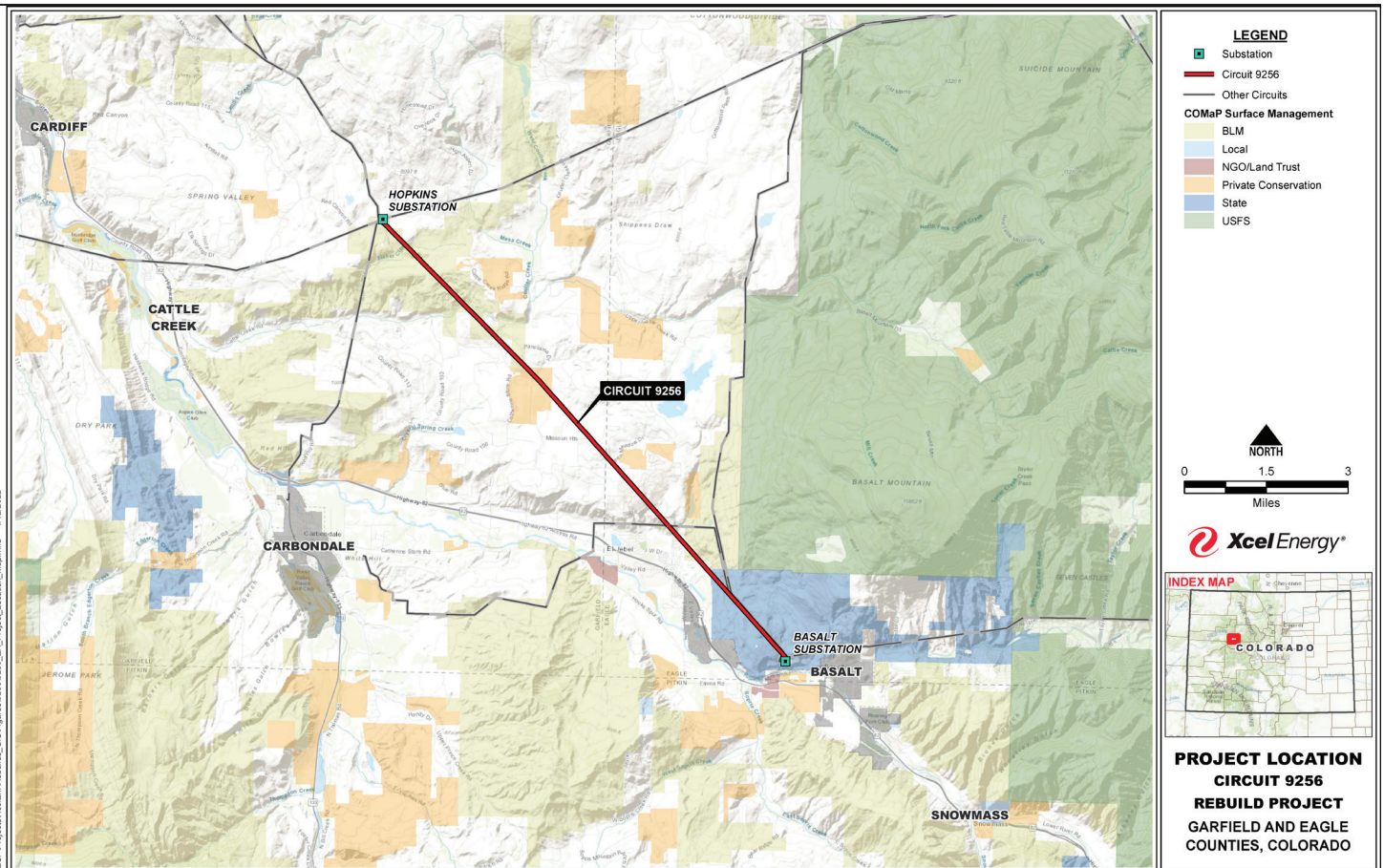
INFORMATION SHEET  
COLORADO



Xcel Energy is committed to providing safe, reliable electricity for customers throughout Colorado. Rebuilding and replacing aging infrastructure is key to this priority.

Xcel Energy proposes to rebuild the existing 11-mile, 115-kilovolt (kV) transmission line between the Hopkins and Basalt substations in Eagle and Garfield counties. The transmission line was originally built in 1909 with a combination of wood H-frame, fiberglass H-frame and lattice structures. Due to natural weathering and the overall age of poles and structures, it has reached the end of its useful life and will be replaced. New infrastructure will improve electric service reliability to homes and businesses in the region, withstand higher than normal windspeeds, proactively minimize the risk of wildfire, and help meet the growing energy needs of homes and businesses for years to come.

Approximately five miles of the line are located in Eagle County, with the remaining infrastructure in Garfield County. About half of the project is located on property managed by the Bureau of Land Management with another portion within Colorado Parks and Wildlife land, and the rest located on private property. Xcel Energy conducted public meetings and took community input regarding the project and decided to rebuild the transmission line largely within its current 100-foot right-of-way.



I:\ESP\Projects\Colorado\Rebuilds\_GIS\Project9256\_EA\_Project\_Location\_Map.mxd 1/12/2022

**Project details**

- Replace existing structures with 3-pole self-supporting and H-frame steel structures
- The infrastructure will be located within existing right-of-way
- Poles will range from 50 to 100-feet tall with an average of 65 feet depending on location and topography
- Typical length between poles will be approximately 850 feet; however, actual spans will range between 400 and 1,700 feet, depending on topography
- In some cases, Xcel Energy may need to secure additional permanent easements to meet engineering and operational requirements, or temporary easements for construction and property access

**Schedule and next steps**

- Xcel Energy works closely with landowners, local governments, and agencies to permit the project.
- Environmental and land use permitting will be completed in 2024
- Engineering, design, and easement negotiations will be completed in 2024
- Construction will begin in 2025 and should be completed later that year

**Outreach**

Xcel Energy conducted two community meetings in 2022, one in the community room of the Basalt Regional Library on October 12, and the other at Roaring Fork High School on October 18. At the meetings, Xcel Energy provided information about the project, the technologies to be used to construct the project and a general construction timeline. Xcel Energy has mailed information to property owners with land along the route, communicated with business associations, state and local agencies, and regularly engage with county staff and leaders concerning our progress.

For questions or to provide input regarding this project, please email us at [HopkinstoBasalt@xcelenergy.com](mailto:HopkinstoBasalt@xcelenergy.com) or call **303-571-6503**.

