

# Avery Substation Project



## East Site Location

This location is similar to that proposed in the 2018 Windsor Conditional Use Grant application.

The site was rotated so that it could be moved closer to a berm located to the east and the substation equipment moved farther away from Weld County Road 76.



### Electric System

Provides maximum system stability to meet demand and provide reliability over other locations.

### Screening

- 1 Existing berm provides partial screening for neighborhood to the northeast.
- 2 Proposed landscaping along the road and close to subdivisions would screen the view of the substation.

### Distance

- 3 Rotated site position increases the distance of substation equipment from Weld County Road 76 and residences to the south.  
Site position avoids existing irrigation ditches to minimize agricultural impact.
- 4 The possibility of moving the substation farther north was evaluated but eliminated from further consideration due to concerns about impacting irrigation ditches, proximity to wetlands around Lee Lake and placement of the substation closer to residents.

### Wetlands and Wildlife

- 5 Access drive and distribution feeders avoid wetlands.

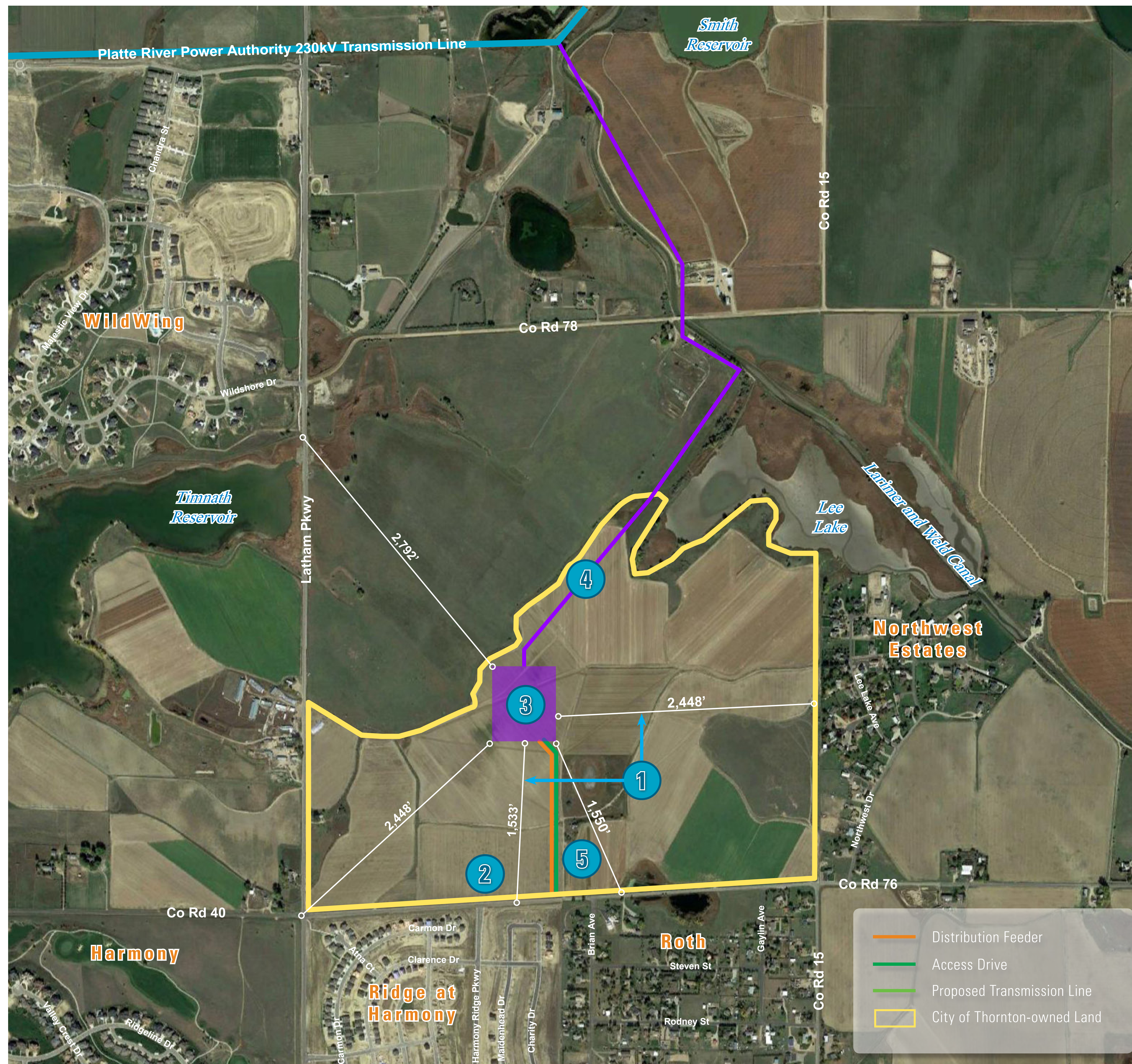


# Avery Substation Project



## West Site Location

Xcel Energy reviewed public input provided earlier in 2019 on the proposed Avery Substation location and has been working cooperatively with the City of Thornton to evaluate a second site location on City-owned property. This area was not previously proposed as a site location but it is near one of the site areas presented at the public open house in 2016.



### Electric System

Provides maximum system stability to meet demand and provide reliability over other locations.

### Screening

- 1 Topography and setbacks provide natural screening.
- 2 Proposed landscaping along the road and close to subdivisions would screen the view of the substation.

### Distance

- 3 Site position increases substation equipment distance from Weld County Road 76 and is more than 1,500 feet away from the closest existing residential subdivision.

Site position avoids existing irrigation ditches to minimize agricultural impact.

- 4 Transmission line is farther from residences and fewer large angle structures are required.

### Wetlands and Wildlife

- 5 Access drive and distribution feeders avoid wetlands and are adjacent to existing linear features such as driveways and irrigation ditches.

Site position is farther from wetlands along Weld County Road 76.