

# ASHLAND – IRONWOOD TRANSMISSION LINE REBUILD PROJECT

INFORMATION SHEET  
WISCONSIN



## Project overview

Xcel Energy plans to seek approval from the Public Service Commission of Wisconsin to relocate two existing electric transmission lines that run between its Gingles Substation southeast of Ashland, Wisconsin and its Ironwood Substation in Ironwood, Michigan. The 88 kilovolt (kV) and 115 kV lines are each about 35 miles long (see map). Public open houses are planned for October 2 in Hurley and Mellen and in Ashland on October 3. The open houses will serve as an opportunity for residents to learn more about the project, view maps, ask questions and provide input on potential route options within the study area. We plan to present route options at another round of public open houses in early 2020.

## Project need

The 88 kV line was built in the 1950s and the 115 kV line was built in the 1970s. Both lines are critical to providing reliable power to northern Wisconsin and Upper Peninsula Michigan customers including Xcel Energy, Bayfield Electric and Price Electric customers. However, due to natural weathering, lightning damage and other factors, the wood pole structures are approaching the end of their useful service life. Approximately 90 percent of the lines run cross-country on separate corridors through difficult terrain features including wetlands, beaver ponds, bogs, rivers, steep ravines and rocky outcroppings that pose challenges for construction and future maintenance.

## Regulatory process

The proposed project requires approval from the Public Service Commission of Wisconsin for a Certificate of Public Convenience and Necessity (CPCN). The Commission will determine whether the project is needed and the appropriate size, configuration, and timing for the project. If the Commission determines that the project is needed, they will then determine the route for the project. There are multiple opportunities for stakeholder and public input in both of these proceedings. Xcel Energy plans to submit the CPCN application in late 2020.

## PROJECT TIMELINE

**2019-2020** – Routing Evaluation/Public Outreach

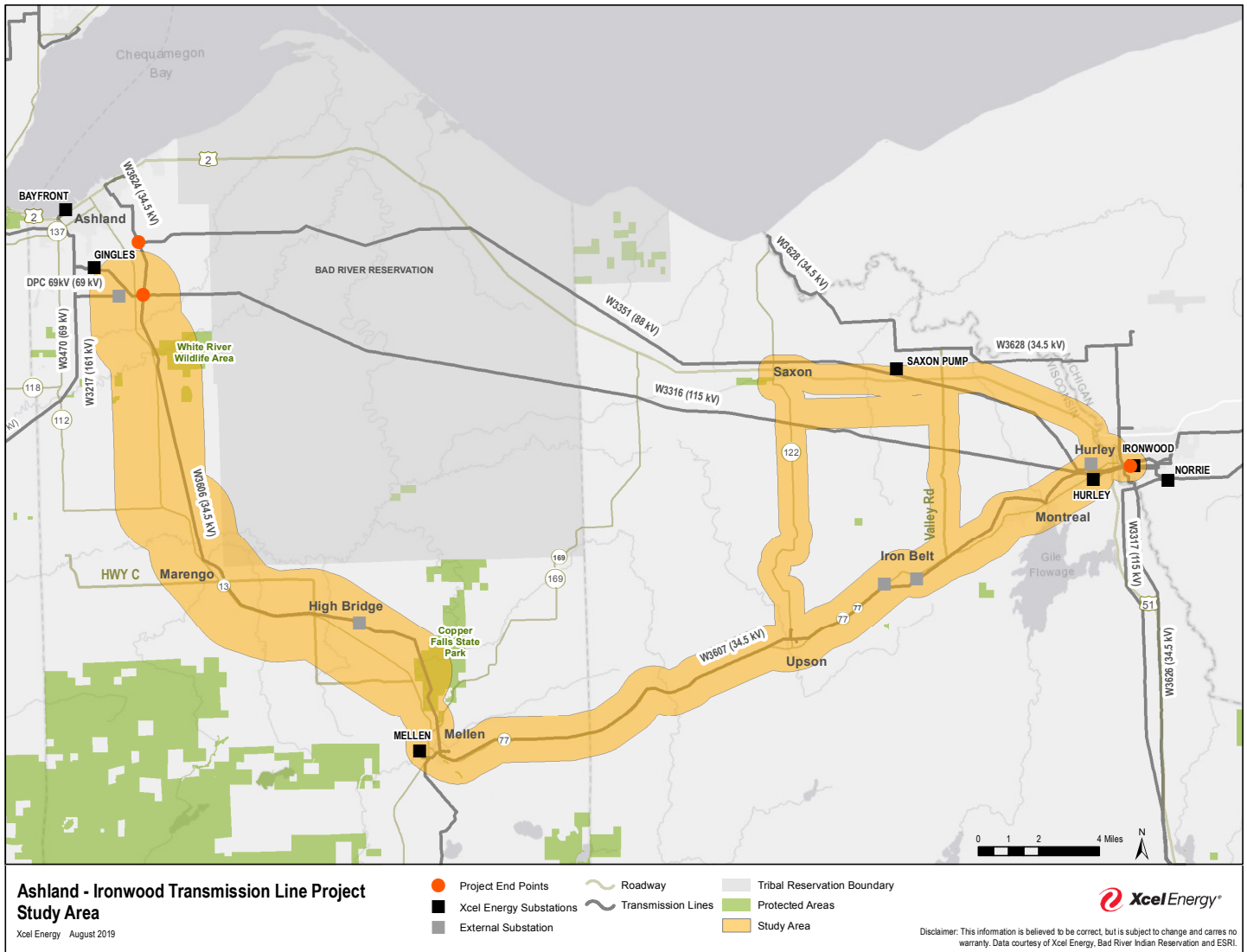
**2021-2022** – WI PSC Routing/Permitting Process

**2023-2024** – Design and Easement Procurement

**2025-2026** – Construction Phase

**2027-2028** – Restoration/Project Closeout

ASHLAND – IRONWOOD TRANSMISSION LINE REBUILD PROJECT



**Public outreach**

Xcel Energy is committed to working with all residents, landowners, local communities and officials, state agencies and other stakeholders to explain the need for the rebuild project and to identify the most preferable route options. Everyone is encouraged to participate in the local permitting process by attending open houses and providing comments and feedback.

**Contact us**

You can submit questions or comments by sending an email to [matthew.j.mcfarlane@xcelenergy.com](mailto:matthew.j.mcfarlane@xcelenergy.com) or calling 715.737.2434. Project information is also available at [xcelenergy.com/ashlandironwood](http://xcelenergy.com/ashlandironwood).

