

# HOPKINS-BASALT TRANSMISSION LINE REBUILD PROJECT

INFORMATION SHEET  
COLORADO



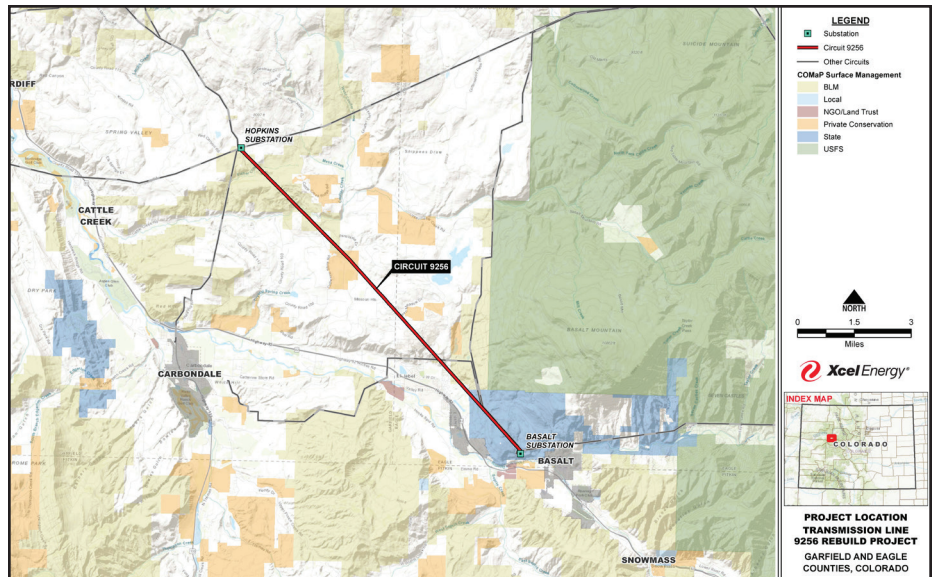
Xcel Energy is committed to providing safe, reliable electricity for customers. Key to this priority is rebuilding and replacing older infrastructure to help ensure we continue to deliver the reliable electricity on which our customers depend.

The existing 11-mile Hopkins-Basalt 115-kiloVolt (kV) transmission line was originally built more than 100 years ago in 1909 and has reached the end of its useful life. Due to natural weathering and the overall age of poles and structures, the entire line must be replaced. The new infrastructure will improve electric service to homes and businesses in Eagle and Garfield Counties, meeting current needs and future growth.

Approximately five miles of the line are located in Eagle County, with the remaining infrastructure in Garfield County; about half of the project is located on property managed by the Bureau of Land Management with the rest located on private property.

## Project details:

- Replace existing structures with single-pole and H-frame structures.
- The infrastructure will be located within the current project Right-of-Way.
- Poles will range from 35 to 100-feet tall with an average of 65 feet depending on location and topography.
- Average length between poles will be 400 to 1,400 feet, depending on topography.
- In most cases, Xcel Energy will continue to use the existing 100-foot-wide right-of-way. In some cases we will purchase additional easements to meet engineering and operational requirements, or temporary easements for construction and property access.
- Where possible, we will parallel existing roads.
- Landowners are compensated for the purchase of easements and Right-of-Way and can continue to use the land for most activities. The easement generally grants Xcel Energy the right to build, operate and maintain the transmission infrastructure.



## CONTACT INFO

[xcelenergy.com/HopkinstoBasalt](https://xcelenergy.com/HopkinstoBasalt)  
303-571-6503  
[HopkinstoBasalt@xcelenergy.com](mailto:HopkinstoBasalt@xcelenergy.com)

## Schedule and next steps

- We are currently working closely with landowners, local governments, and agencies to permit the project.
- Environmental and land use permitting to be completed by spring 2023.
- Engineering, design, and easement negotiations will be completed in 2022 and 2023. Construction will begin in summer 2023; the line is expected to be in-service in early 2024.